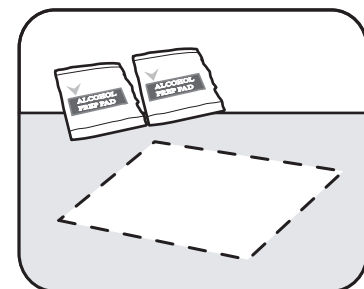
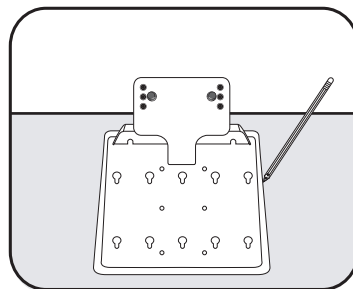
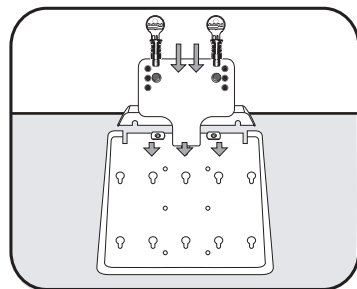
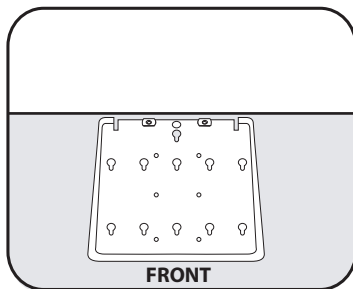


Model 31177 | Laptop Security Stand Installation Guide

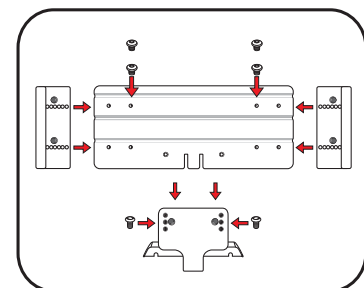
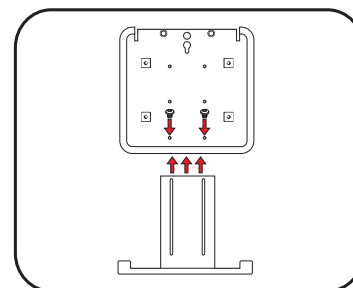
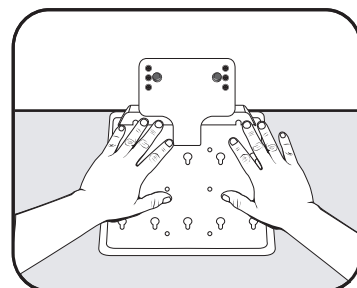
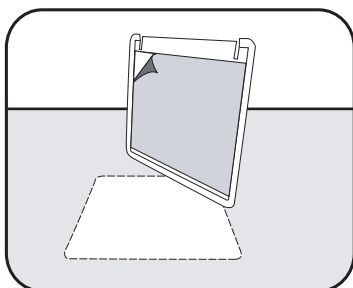


STEP 1:
Place Base Plate in final placement position, making sure the side with the three holes is facing away from you.

STEP 2:
Assemble the Lock Block to the Base Plate. Slide Weld-nut bar under base plate and insert keys into lock block.

STEP 3:
Place Base Plate in final placement position. Mark position with a pencil to use as installation guides.

STEP 4:
With the provided Alcohol pads, clean the surface where the Base Plate will be positioned.

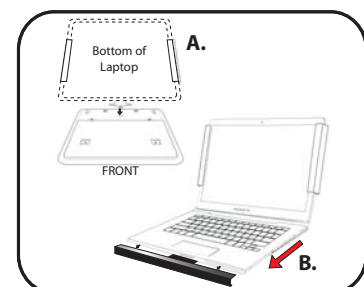
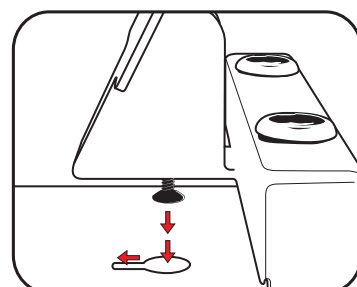
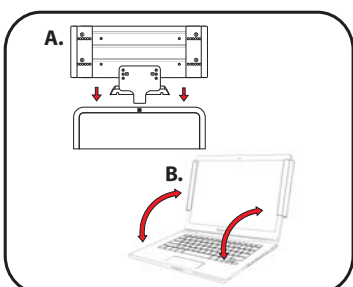


STEP 5:
Once dried, remove protective liner from adhesive tape on bottom of Base Plate.

STEP 6:
Press firmly down against the plate and rotate hands in a circular motion to remove air pockets from bottom of plate.

STEP 7:
Align Slide Bracket slots to the base plate. Screw Bracket loosely allowing to slide easily.

STEP 8:
Assemble Ribbed Plate and wings according to size of your laptop. Slide Ribbed Plate onto Paddle Bracket and secure with screws.

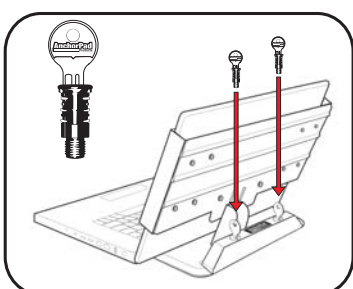


STEP 9:
(A) Slide assembled Back Plate onto laptop. (B) Once attached fold keyboard towards monitor.

STEP 10:
Connect Back Plate to Base Plate by inserting the flat-head screw into the keyhole and pulling forward to lock.

STEP 11:
Adjust Slide Bracket to fit snugly on keyboard. Mark position with pencil on bottom of slide. Remove back plate and tighten slide bracket on base plate at marked position.

STEP 12:
(A) Re-insert flat head screw with computer in place. (B) Slide Back Plate and laptop forward to locked position and tighten flat-head screw from the bottom until snug.

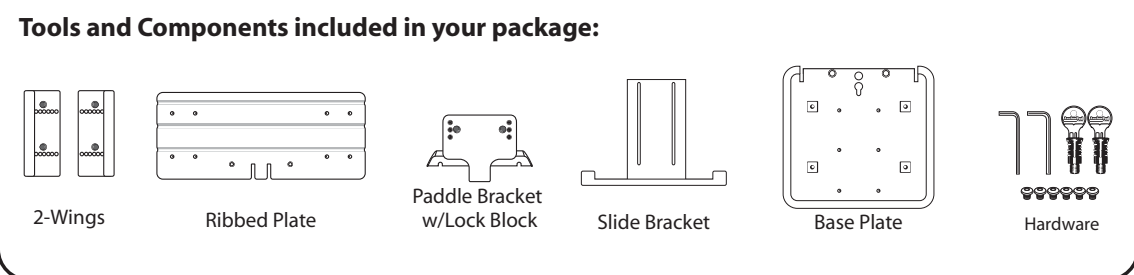


STEP 13:
Insert both locks into the Lock Block. Use keys to turn locks clockwise until fully threaded into pemnuts on the Base Plate. **(Do Not Overtighten)** Remove keys. Record key code for future reference and store keys in a safe place.

Notes Before Beginning Installation:

- To familiarize yourself with the entire installation process, please take a moment to read through all of the installation steps.
- Disconnect all cables from the back of the computer and clear the work surface around the desk.
- Please allow 24 hours for complete curing of adhesive.

Tools and Components included in your package:



- 2-Wings
- Ribbed Plate
- Paddle Bracket w/Lock Block
- Slide Bracket
- Base Plate
- Hardware